

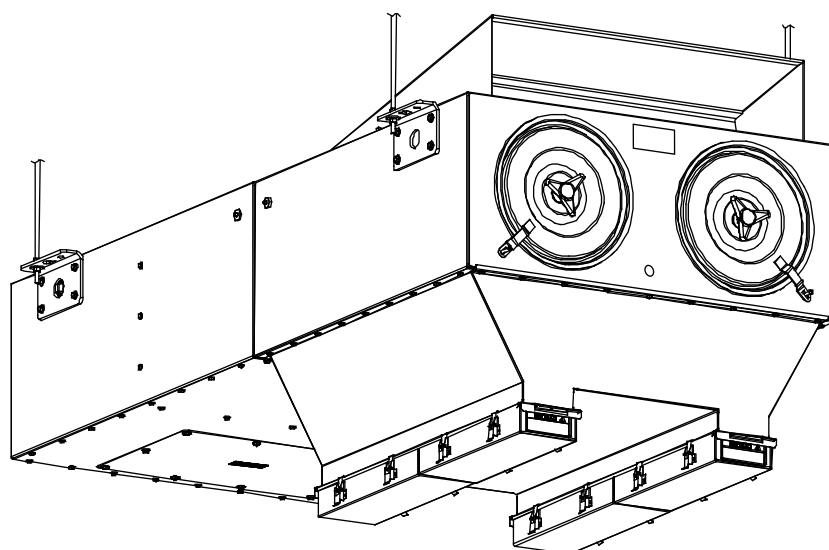


## Ambient Collection System

AT-3000

### Replacement Parts List

Includes Illustrations and Replacement Parts



This manual is property of the owner. Leave with the unit when set-up and start-up are complete. Donaldson Company reserves the right to change design and specifications without prior notice.

Illustrations are for reference only as actual product may vary.



Contents

AT-3000 Collector ..... 1

Filter Access Cover Assembly ..... 3

Delta P Control Assembly ..... 4

Magnehelic® Gauge Assembly ..... 5

Photohelic® Gauge Assembly ..... 6

Control Box and Timer Assembly ..... 7

Diaphragm and Solenoid Valve and Repair Kits ..... 8

Hopper Assembly ..... 9

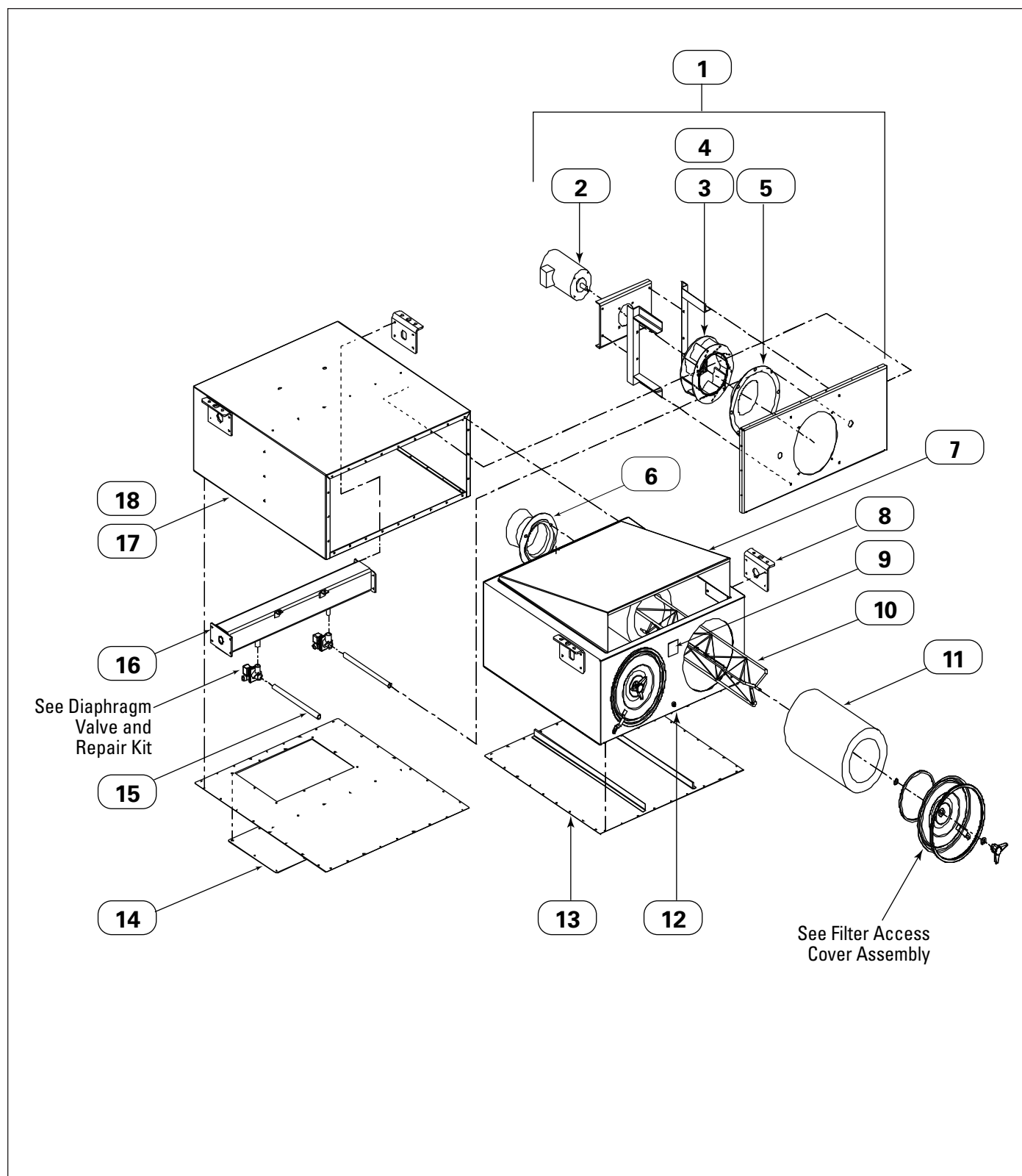
Service Notes ..... 10

Magnehelic® and Photohelic® are registered trademarks of Dwyer Instruments, Inc.

Data Sheet

Model Number _____	Serial Number _____
Ship Date _____	Installation Date _____
Customer Name _____	
Address _____	
_____	
Filter Type _____	
Accessories _____	
Other _____	

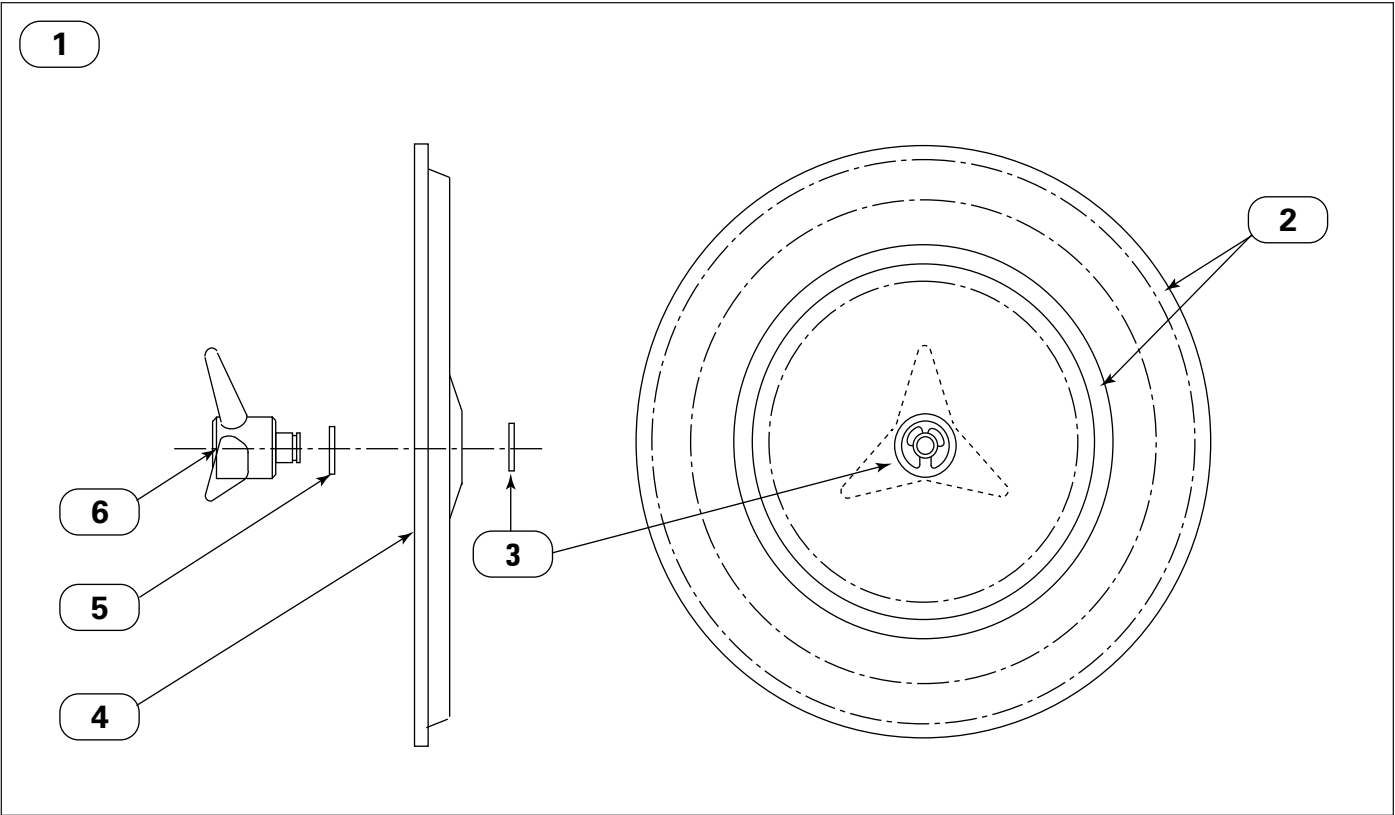
# AT-3000 Collector



AT-3000 Collector

Item	Part Number	Description
1	7684101	Blower Panel Assembly (motor not included)
2	1958600	Motor, 3 Hp, 3450, 208-230-460/60/3
	1958800	Motor, 3 Hp, 3450, 575/60/3
3	3575401	Blower Wheel, CW #12 Steel, 3 Hp, - Units Built Before December 2000
	7902201	Blower Wheel, 315, Units Built After December 2000
4	7912701	Hub Bushing, 7/8-in, Units Built After December 2000
5	2328501	Inlet Cone, #12 Steel, Units Built Before December 2000
	7902401	Inlet Cone, Units Built After December 2000
6	5889401	Venturi, Plastic
7	7683701	Dirty-Air Chamber Weldment
8	7672401	Lifting Lug
9	7946804	Warning Label, Small
10	2540000	Yoke Weld
11	P522193-016-340	Ultra-Web® FR Filter
	P031575-016-340	Cellulux FR Filter
12	9582002	Sprinkler Head, Units Built After December 2000
13	7686901	Base Pack, Standard Bottom
14	7687301	Access Cover Panel
15	7671101	Pipe, 3/4-in NPT x 17.25-in
16	7671901	Manifold Assembly
17	7670701	Clean-Air Chamber Weldment
18	0830300	Polyfoam Sheet, 1.50-in Thick with PSA
Not Illustrated		
	2537601	Solenoid Muffler, 1/8-in NPT
	7946804	Warning Label

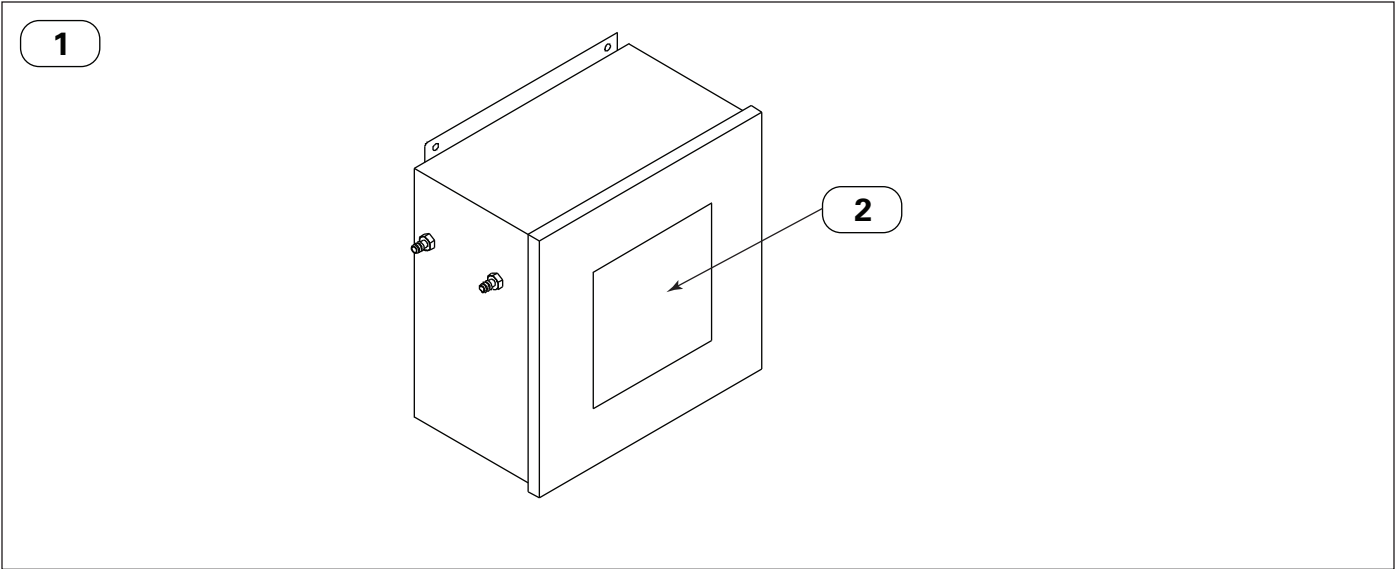
Filter Access Cover Assembly



Filter Access Cover Assembly

Item	Part Number	Description	Model
1	2691200	Access Cover and Knob Assembly	All
2	AD3754201	Gasket Kit Access Cover (Kit includes inner and outer gasket)	All
3	2242200	Clip, 0.668-in ID	All
4	2681500	Access Cover	All
5	2242300	Gasket Washer 13/16-in ID	All
6	2242700	Knob, 3-Lobe, 1/2-13 UNC-2B	All

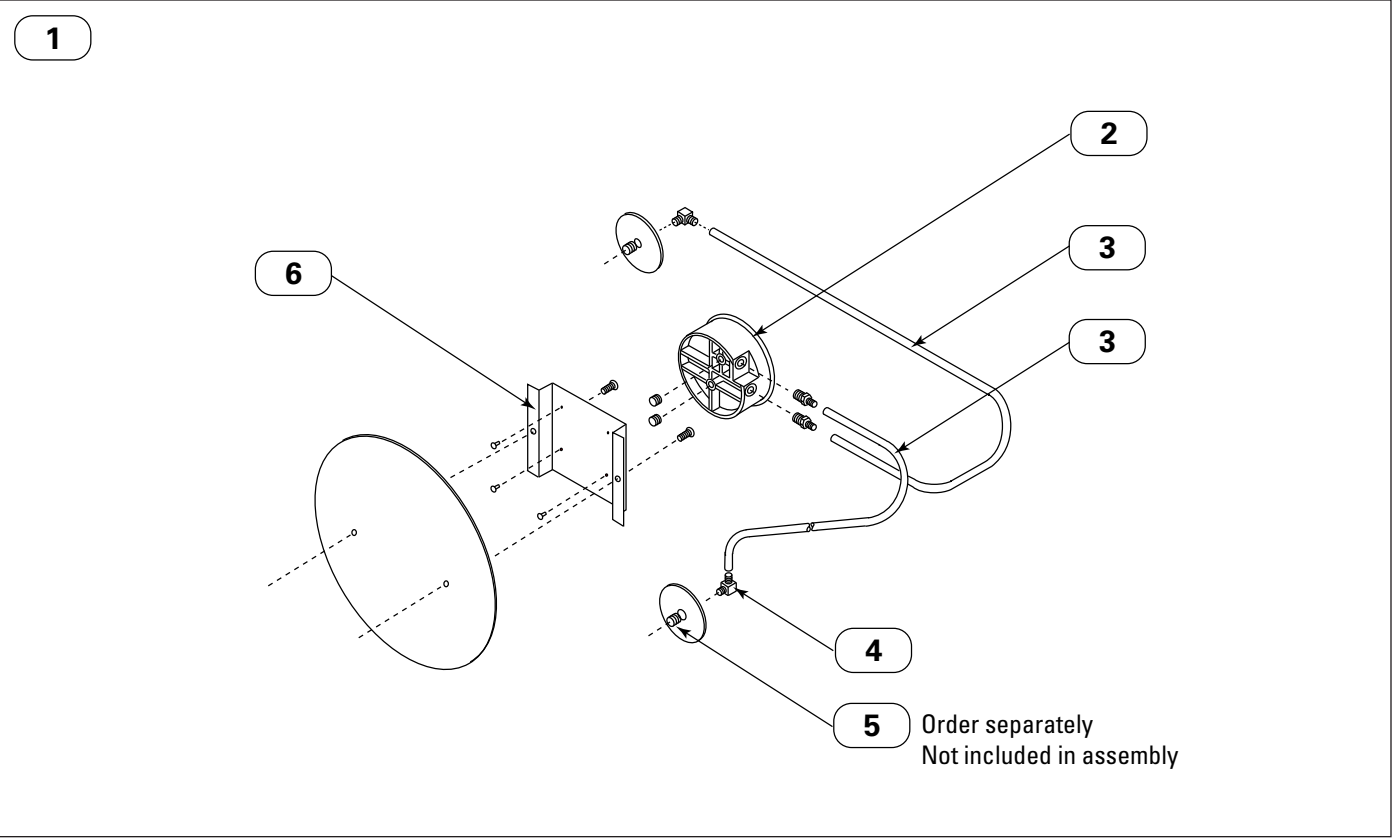
# Delta P Control Assembly



Delta P Control Assembly

Item	Part Number	Description
1	7851601	Delta P Control in NEMA 4 Weatherproof Enclosure
	7536802	Delta P Control Assembly, 110-Volt, No Timer
	7536902	Delta P Control with 3-Pin Timer 110 Volt NEMA 4
	7536904	Delta P Control with 6-Pin Timer 110 Volt NEMA 4 (up to 3 units)
	7536906	Delta P Control with 10-Pin Timer 110 Volt NEMA 4 (up to 5 units)
	AD3411301	Delta P Plus Control Assembly, 110-Volt, No Timer
	AD3411402	Delta P Plus Control with 3-Pin Timer 110 Volt NEMA 4
	AD3411404	Delta P Plus Control with 6-Pin Timer 110 Volt NEMA 4 (up to 3 units)
	AD3411406	Delta P Plus Control with 10-Pin Timer 110 Volt NEMA 4 (up to 5 units)
2	7508201	Delta P Control Board
	7053601	Delta P Plus Control Board
Not Illustrated		
	AD3380901	Dustronics Control, NEMA 4

Magnehelic® Gauge Assembly

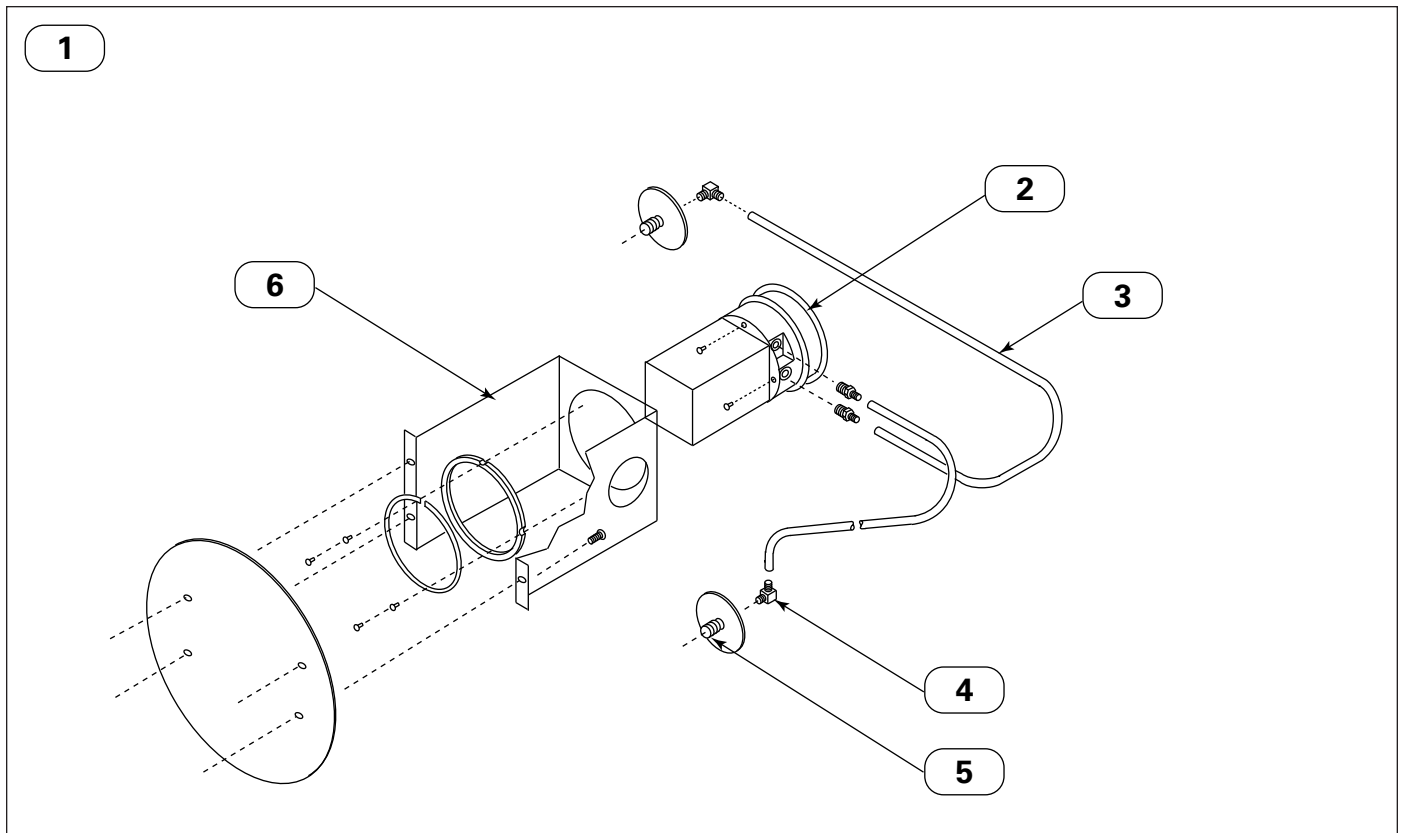


Magnehelic Gauge Assembly

Item	Part Number	Description
1	2959600	Magnehelic Gauge Assembly
2	1647500	Magnehelic Gauge
3	2334200	Plastic Tubing, Vinyl, 3/16-in ID, 5/16-in OD
4	1647700	1/8-in NPT x 3/16-in Barb Plastic Tubing Male 90° Elbow
5	2972801	Bulkhead Adapter, 1/8-in NPT, not included in item 2959600
6	2324600	Magnehelic Gauge Mounting Panel



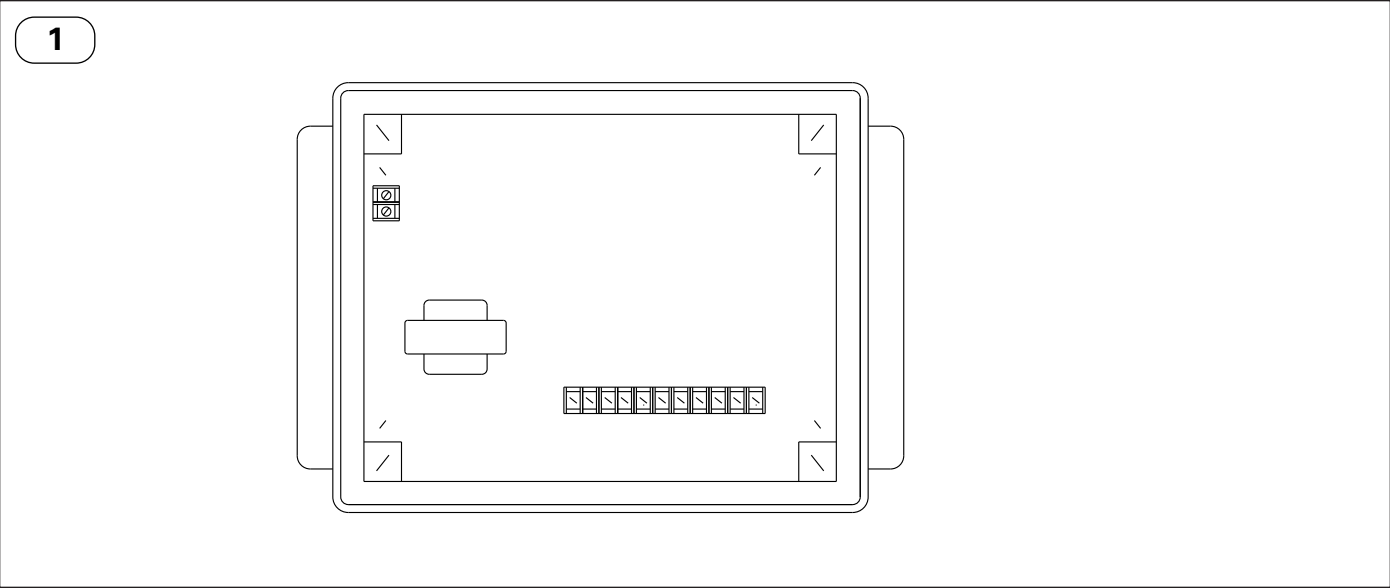
## Photohelic® Gauge Assembly



Photohelic Gauge Assembly

Item	Part Number	Description
1	2959700	Photohelic Gauge Assembly
2	1939600	Photohelic Gauge
3	2334200	Plastic Tubing, Vinyl, 3/16-in ID, 5/16-in OD
4	1647700	1/8-in NPT x 3/16-in Barb Plastic Tubing Male 90° Elbow
5	2972801	Bulkhead Adapter, 1/8-in NPT, not included in item 2959600
6	2335300	Photohelic Gauge Mounting Panel

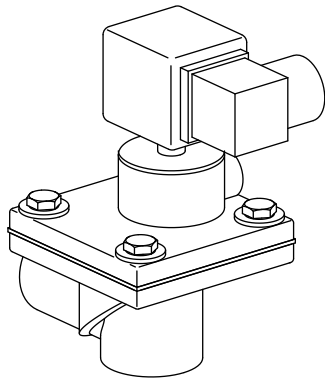
Control Box and Timer Assembly



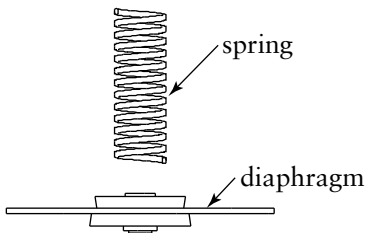
Control Box and Timer Assembly

Item	Part Number	Description
1	2367700	Control Box and Timer Assembly, 3-Pin (standard
	2345403	Control Box and Timer Assembly, 6-Pin (up to 3 units)
	2365200	Control Box and Timer Assembly, 10-Pin (up to 5 units)
Not Illustrated		
	1906100	Timer, 3-Pin
	2144000	Timer, 6-Pin
	2489500	Timer, 10-Pin
	2366101	Wiring Diagram, 3-Pin
	2366102	Wiring Diagram, 6-Pin
	2127600	Wiring Diagram, 10-Pin

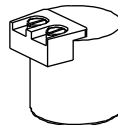
# Diaphragm and Solenoid Valve and Repair Kits



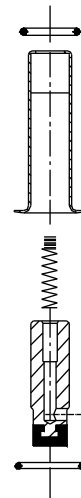
**1** Diaphragm Valve Goyen CA20



**2** Diaphragm Valve Repair Kit, Goyen CA20



**3** Coil

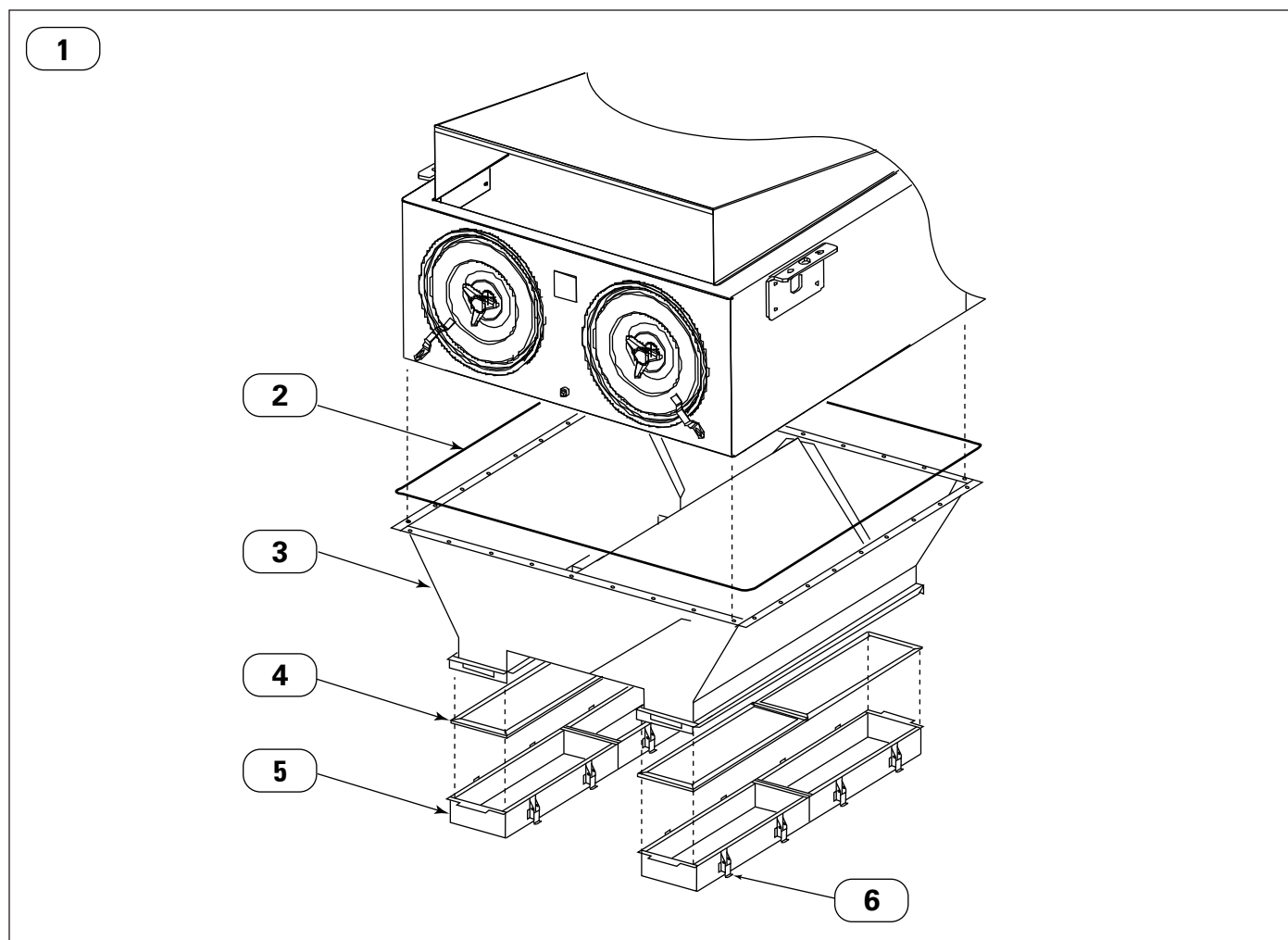


**4** Solenoid Valve Rebuild Kit 1/8-in NPT

## Diaphragm and Solenoid Valve and Repair Kits

Item	Part Number	Description
<b>Refer to collector for type of diaphragm valve originally supplied</b>		
1	7549208	Diaphragm Valve with Integral Solenoid, 3/4-in
2	AG8131305	Diaphragm Valve Repair Kit, 3/4-in
3	7597801	Solenoid Valve Coil, 120-Volt AC
4	2463600	Solenoid Valve Repair Kit, 1/8-in NPT, NEMA 4

## Hopper Assembly



Hopper Assembly

Item	Part Number	Description
1	7684801	Hopper Assembly
2	0509700	1/4-in Diameter Rope-Type Sealant
3	7684901	Hopper Weldment
4	7674501	Gasket, Dustpan
	1881500	Spray Release Agent (order when replacing Dustpan Gasket)
5	7675901	Dustpan Assembly (includes latches)
6	3873501	Draw Latch

## Service Notes

[illegible]

## Service Notes

[illegible]



## The Donaldson Torit Warranty

Donaldson warrants to the original purchaser that the major structural components of the goods will be free from defects in materials and workmanship for ten (10) years from the date of shipment, if properly installed, maintained and operated under normal conditions. Donaldson warrants all other Donaldson built components and accessories including Donaldson Airlocks, TBI Fans, TRB Fans, Fume Collector products and Donaldson built Afterfilters for twelve (12) months from date of shipment. Donaldson warrants Donaldson built filter elements to be free from defects in materials and workmanship for eighteen (18) months from date of shipment. Donaldson does not warrant against damages due to corrosion, abrasion, normal wear and tear, product modification, or product misapplication. Donaldson also makes no warranty whatsoever as to any goods manufactured or supplied by others including electric motors, fans and control components. After Donaldson has been given adequate opportunity to remedy any defects in material or workmanship, Donaldson retains the sole option to accept return of the goods, with freight paid by the purchaser, and to refund the purchase price for the goods after confirming the goods are returned undamaged and in usable condition. Such a refund will be in the full extent of Donaldson's liability. Donaldson shall not be liable for any other costs, expenses or damages whether direct, indirect, special, incidental, consequential or otherwise. The terms of this warranty may be modified only by a special warranty document signed by a Director, General Manager or Vice President of Donaldson. To ensure proper operational performance of the equipment, use only genuine Donaldson replacement parts. THERE EXIST NO OTHER REPRESENTATIONS, WARRANTIES OR GUARANTEES EXCEPT AS STATED IN THIS PARAGRAPH AND ALL OTHER WARRANTIES INCLUDING MERCHANTABILITY AND FITNESS FOR A PARTICULAR PURPOSE, WHETHER EXPRESS OR IMPLIED ARE HEREBY EXPRESSLY EXCLUDED AND DISCLAIMED.



### Parts and Service

For genuine Donaldson replacement filters and parts, call the Parts Express Line. For faster service, have unit's model and serial number, quantity, part number, and description available.

**Donaldson Company, Inc.**  
**Torit**  
**PO Box 1299**  
**Minneapolis, MN 55440-1299**  
**U.S.A.**

**800-365-1331 USA**  
**800-343-3639 within Mexico**

**[donaldsontorit@donaldson.com](mailto:donaldsontorit@donaldson.com)**  
**[donaldsontorit.com](http://donaldsontorit.com)**

Donaldson Company, Inc. is the leading designer and manufacturer of dust, mist, and fume collection equipment used to control industrial-air pollutants. Our equipment is designed to help reduce occupational hazards, lengthen machine life, reduce in-plant maintenance requirements, and improve product quality.

© 2010 Donaldson Company, Inc.  
Printed in USA

RPL AD3964101 (ENG), Revision 1  
June 2014